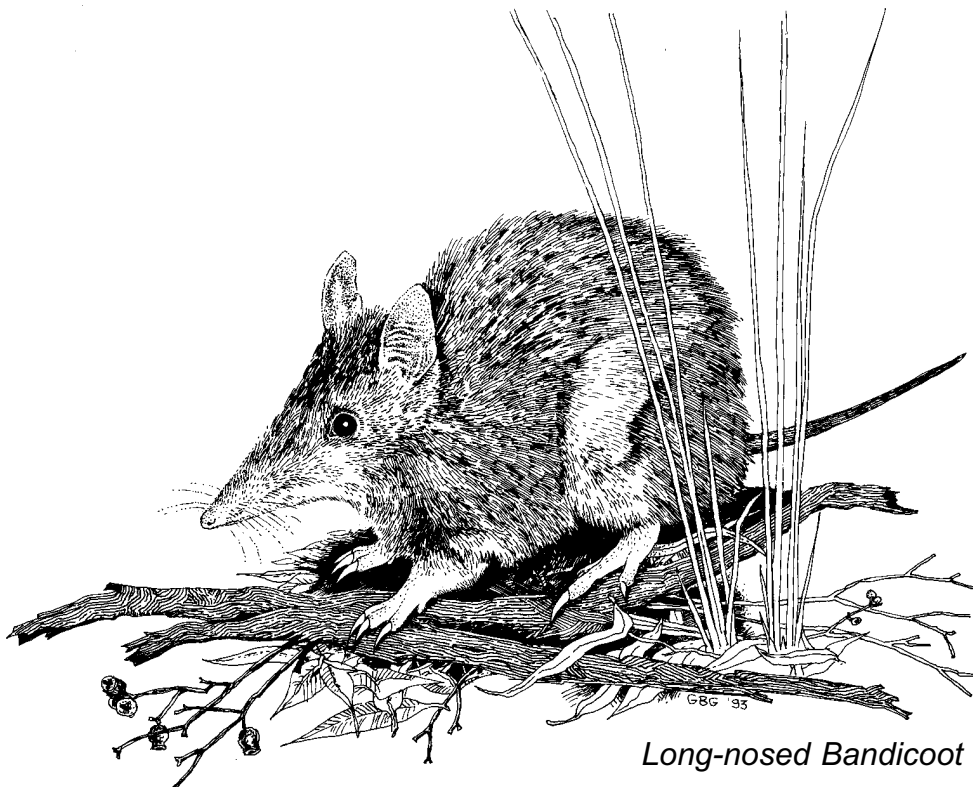


AUGUST

Look out for:

- Both Northern Brown & Long-nosed Bandicoots commence breeding
- Magpielarks & White-winged Choughs start building their mud nests
- Male Brown Antichinus (a locally common marsupial mouse) die, leaving the females to raise the next generation
- Pallid Cuckoos arrive and commence their semi-toned ascending calls
- Mid August, Wedge-tailed Shearwaters return to NSW waters from the seas around The Phillipines
- Koala cubs leave their mothers pouches and climb onto their mothers' backs
- Golden Donkey Orchids *Diuris aurea* & Pink-finger Orchids *Caladenia carnea* flower.
- Mid August the first migratory shorebirds return particularly Sharp-tailed Sandpipers
- Double-banded Plovers assume breeding plumage and then return to New Zealand
- Late August, young Magpies hatch in the nests, and male Magpies start swooping on us!
- Little Penguin eggs hatch on Lion Island
- Gosford Wattle *Acacia prominens* commences flower attracting bees and butterflies.
- Bush Flies overwinter as larvae and pupae in crevices
- White Donkey Orchid *Diuris alba*, White Finger Orchid *Caladenia catenata* & the Spotted Sun Orchid *Thelymitra ixiodes* all commence flowering in low coastal heath
- Sawfly grubs cluster on Eucalypt leaves
- Fringed Wattle *A. fimbriata* will flower during August
- *Grevillea shiressii* is now rare on the Central Coast but may be found flowering in some gullies



Long-nosed Bandicoot

Green Dates

2nd Week of August

Landcare Week

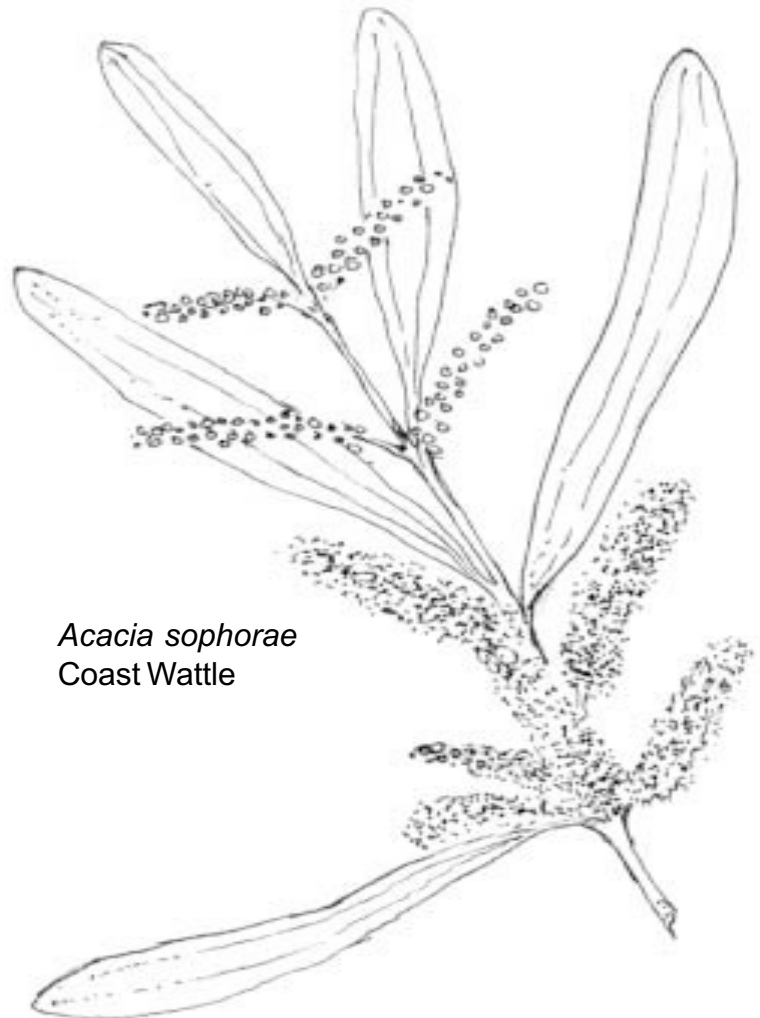
Landcare Australia

www.landcareaustralia.com.au

nature study info

Conical scrapes in the lawn or garden are evidence that Bandicoots have been visiting. These shy, rabbit sized marsupials forage at night for invertebrates and plant tubers. The major threats to Bandicoots are land clearing, foxes and wildfire.

Of the three species found on the Central Coast the most common is the Long Nosed Bandicoot. The Hawkesbury River is generally thought of as the divide between the Northern and Southern Brown Bandicoots however there is some overlap and there are records of the endangered Southern Brown north of the River. Any sightings of Brown Bandicoots should be reported to the National Parks and Wildlife Service.



Acacia sophorae
Coast Wattle

Sharing and Caring

Bitou Bush was introduced to Australia and used to stabilise the coastal dunes after sand mining. Bitou took over and smothered our native coastal scrub. It is now listed as a “key threatening process” by National Parks and Wildlife. **Foxes** eat the berries and spread the seeds. Biological controls are not as successful as we would like.

AUGUST

date

observations

location

weather

date	observations	location	weather

diary

AUGUST

AUGUST

date

observations

location

weather

diary

AUGUST

date

observations

location

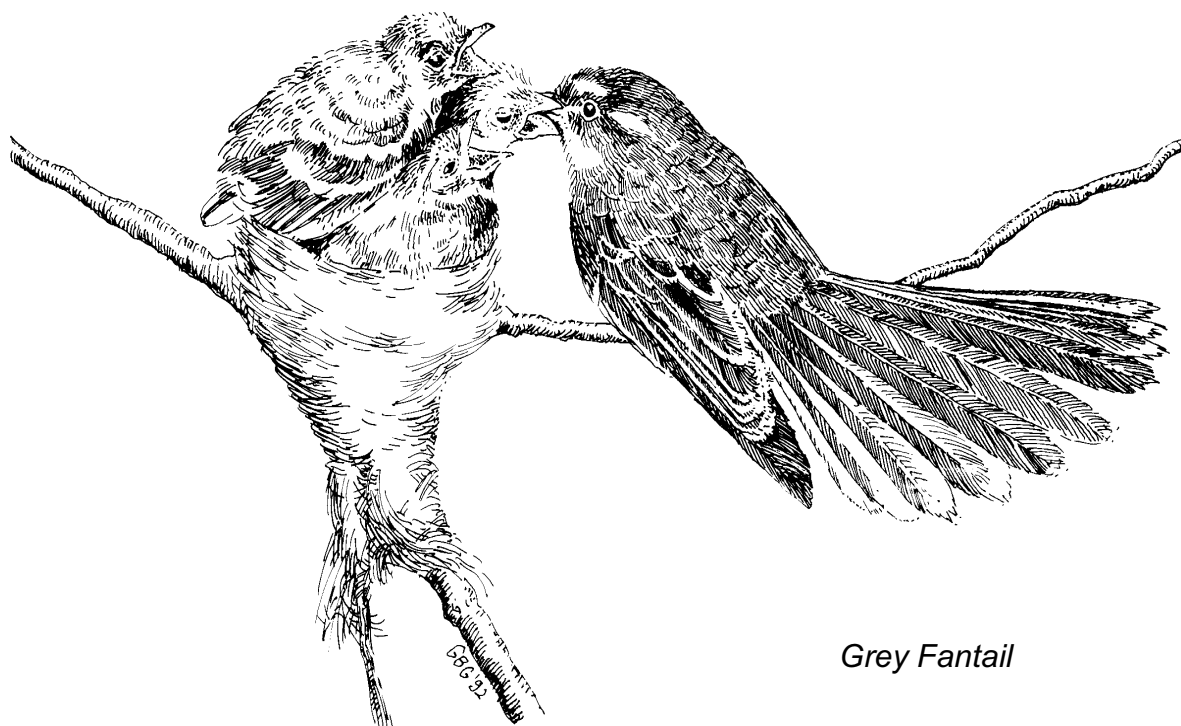
weather

diary

SEPTEMBER

Look out for:

- Reptiles can be seen basking in the sun
- Hump-back Whales can be seen offshore heading south
- Micro-bats can be heard at night
- Christmas Beetles start banging against the windows at night
- Mid September Channel-billed Cuckoos return calling raucously and loudly at night.
- The best time to see terrestrial orchids as now Flying Duck Orchids *Caleana major* and Bearded Orchids *Calochilus* Spp also appear.
- Baby Magpies can be heard and seen, demanding food
- Carpet Pythons lay their eggs
- Late September Dollarbirds, Rainbow Bee-eaters, Sacred Kingfishers and Koel Cuckoos all return
- Spangled Drongos depart to northern NSW to breed
- After flowering Drumsticks (*Isopogon* spp) develop spherical woody cones
- In heath shrublands and woodland forests on sandy soils *Dampiera stricta* and *Patersonia* spp produce beautiful purple flowers
- The spectacular yellow flowers of Graceful Bush-pea *Pultenaea flexilis* appear
- Bush Stone-curlews in the Brisbane Water area commence egg laying, earliest date 9 September
- Waratahs *Telopea grandis* begin flowering



Grey Fantail

Green Dates**Biodiversity Month**

1st September
7th September

Wattle Day www.wattleday.asn.au
Threatened Species Day
Threatened Species Network
www.nccnsw.org.au/member/tsn

nature study info

With its beautiful carolling and relative lack of shyness, the 'magie' is a regular companion. But this normally friendly neighbour can become a bit pesky during breeding time.

During the short nesting season (August to October) the urge for the dominant male to defend their territory becomes very strong. The natural reaction is for the birds to protect their young and eggs from any possible 'attackers' including humans. Most magpies will know most of the people that live within their relatively small territories and the small proportion that swoop (less than 10% of pairs will have a male that is a bit aggro) almost always select the same individuals each time. The main exceptions to this rule are those that swoop cyclists or posties or live near schools - probably because there are simply too many people to recognise. Usually the divebombing attacks are only intimidation but there have been rare strikes inflicting painful scalp wounds on people.

What Can You Do?

- Magpies are fully protected throughout NSW it is an offence to kill the birds or interfere with the eggs or young. In only rare circumstances when a bird is particularly aggressive should you contact the local National Parks and Wildlife Service.

Some ways to avoid actual attack include not walking through the magpies territory particularly during breeding time, wearing a hat or carrying an umbrella or stick (do not swing it as this may provoke the bird).



Boronia pinnata

Weed Guide

Blackberry is beginning to flower. Best time to poison it is from now until it sets fruit.
Privet is flowering and the strong perfume may affect asthmatics.

SEPTEMBER

date

observations

location

weather

SEPTEMBER

diary

SEPTEMBER

date

observations

location

weather

diary

SEPTEMBER

date

observations

location

weather

SEPTEMBER

diary

SEPTEMBER

date

observations

location

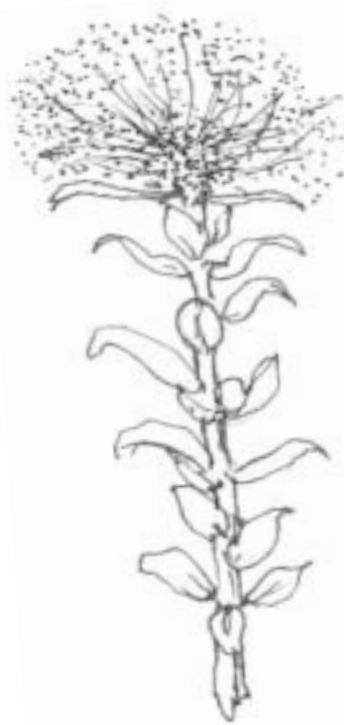
weather

diary

OCTOBER

Look out for:

- Mistletoe berries are abundant and the tiny Mistletoebirds are readily seen and heard
- Laughing Kookaburras tunnel into termite nests in trees for nesting hollows
- Rufous Fantails, Leaden Flycatchers & Black-faced Monarchs return to coastal forests
- Pied Currawongs and Willie Wagtails are nesting
- Flannel Flowers dominate the coastal sandy heaths
- Exhausted Short-tailed Shearwaters are washed up on our beaches enroute to their southern breeding islands.
- Snakes and Skinks are active
- Cicadas emerge from under the ground and leave their pupal cases on tree trunks
- Peak time for viewing terrestrial orchids continues with the Slender Onion Orchid *Microtis parviflora* coming into flower on the heaths and open woodland.
- Jacarandas and Illawarra Flame Trees commence flowering
- Christmas Bush puts on creamy coloured flowers and Waratahs commence flowering
- A large breeding colony of Grey-headed Flying Foxes forms at Matcham for the birth of the young, the adults using this as a base for forays into forests and gardens.
- Bushfire Season in earnest if there has been a dry spring
- Late October, Cicadas emerge from the ground and commence calling
- Slender Onion, Turpentine Trees *Syncarpia glomulifera* begin to flower, attracting insects, lorikeets and Noisy Miners.



Kunzea capitata

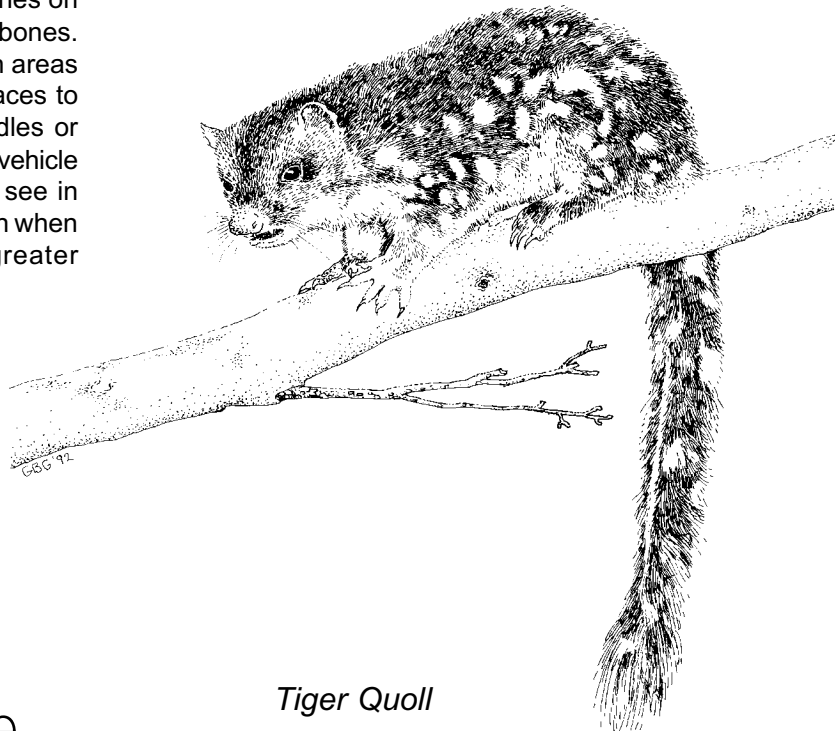
Green Dates

Late October
Water Week

Department Land and Water Conservation
www.dlwc.nsw.gov.au

nature study info

Look for scratches on trees caused by arboreal marsupials such as gliders, possums and koalas. There are many mammals that leave signs of their presence. This includes scats (i.e. droppings) tracks, scratches on trees, diggings, shelters and bones. Look for tracks or footprints in areas of soft soil or mud. Good places to look are around dams, puddles or along the sides of dirt roads or vehicle tracks. Tracks are easier to see in early morning or late afternoon when the sun is low casting a greater shadow.



Tiger Quoll

Weed Guide

Annual and perennial weeds start flowering along with many introduced exotic grasses such as Rye grass. The pollen is so small and light that when it drifts through the towns and cities susceptible people develop hay fever. Sometimes they blame Wattle because it is flowering now and is so spectacular! Wattle is not to blame because its pollen is so heavy it doesn't drift far in the wind.

OCTOBER

date

observations

location

weather

OCTOBER

diary

OCTOBER

date

observations

location

weather

diary

OCTOBER

date

observations

location

weather

OCTOBER

diary

OCTOBER

date

observations

location

weather

diary

NOVEMBER

Look out for:

- Prawns wait for rain to go to sea
- Trigger Plants are now common
- Flying Ants swarm on humid evenings
- Fox Cubs are born
- Coast Wattle *Acacia longifolia* in bloom, attracting many bugs and butterflies
- Noisy Miner, Noisy Friarbird, Red Wattlebird & Little Wattlebird chicks are calling to be fed
- Shearwaters lay their eggs on Lion Island & Bird Island
- Peak time for meteor showers in Australia, the Leonids, 15-17 November
- Cabbage Tree Palm fruit ripen and attracts Flying Foxes and Topknot Pigeons.
- Spotted Gums shed their bark, leaving piles of spent bark at their bases.
- Horned Orchids *Orthoceras strictum* and the Bonnet Orchid *Cryptostylis erectus* appear
- Grasshopper plagues



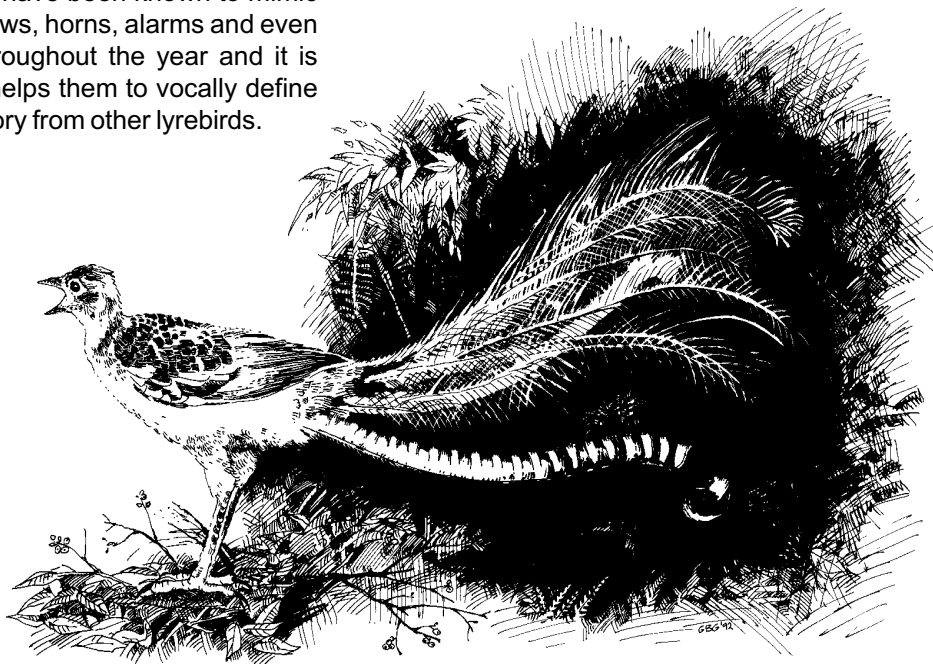
Angophora hispida
Dwarf Apple

Green Dates 1st to 9th NovemberFrog Week Frog and
Tadpole Study Group of NSW
Fatsgroupnsw@hotmail.com2nd NovemberWorld Habitat Day
United Nations 02 92625111
www.un.org

nature study info

Lyrebirds

These shy birds escape by running and dodging rapidly through the undergrowth when threatened. Feeding mainly on ground-dwelling insects, spiders, frogs, and other small invertebrates that they find by scratching among the leaf litter. Lyrebirds are capable of imitating almost any sound, usually mimicking loud clear sounds made by other birds and mammals, mixed with their own song, calls and clicks. Lyrebirds have been known to mimic the sounds of chainsaws, horns, alarms and even trains. They sing throughout the year and it is thought the mimicry helps them to vocally define and defend their territory from other lyrebirds.



Lyrebird

Weed Guide

Now's the time to attack Camphor Laurel. While it is actively growing in Spring you can "frill" it. Don't choose a hot day because the tree may feel heat-stressed and the poison won't circulate. Cut off and 'bag' the flowers and seed heads of the annual and perennial weeds.

NOVEMBER

date

observations

location

weather

NOVEMBER

diary

NOVEMBER

date

observations

location

weather

diary

NOVEMBER

date

observations

location

weather

NOVEMBER

diary

NOVEMBER

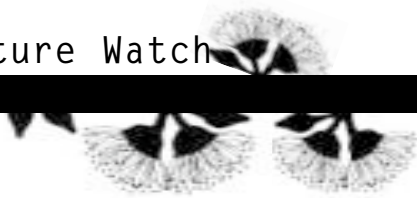
date

observations

location

weather

diary



DECEMBER

Look out for:

- Oyster Spat is collected
- Mud Dauber Wasps make their nests on the sides of buildings
- Christmas Bells in flower, Christmas Bush goes red
- Christmas Hyacinth Orchids *Dipodium punctatum* appear and flower in forest and woodland
- December 22: Summer Solstice, longest day of the year
- Bushfire Season continues if dry, if wet, frog calls at night deafening
- Spotted Marsh Frogs & Bleating Tree Frogs mating
- Sydney Red Gum *Angophora costata* flowers and attracts insects like Bogong Moths
- In coastal districts and on sandstone Old Man Banksia *B serrata* will flower from now until March
- The golden yellow flowers of *Geebung persoonia levis* appear
- Brush Turkey chicks hatch from the nest mounds, after an incubation period of c.50 days.
- Cicada calls deafening in some summers.
- Little Tern nesting activity reaches its peak at Karagi Point sandspit, The Entrance.



Blandfordia

Green Dates 1st-7th December

Coastcare Week

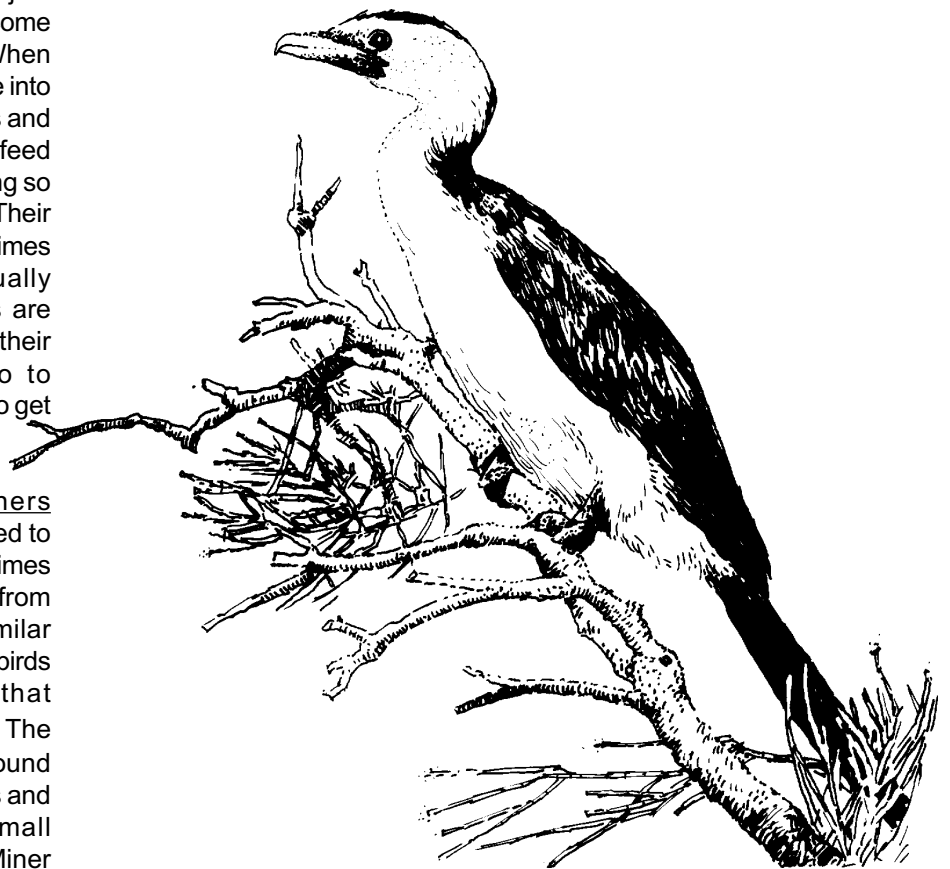
Landcare Australia

www.landcareaustralia.com.au

nature study info

The Indian Myna (a member of the Starling family) was brought to Australia to control grasshoppers and cane beetles and just like the cane toad it hasn't but has become one of our worst invasive species. When gangs of these aggressive birds move into town they take over the food supplies and nest hollows of native animals. They feed on insects but are adept at scavenging so don't leave the pet food unattended. Their roosts are noisy congregations sometimes numbering in the hundreds, usually concealed in thick foliage. Surveys are being conducted to find out about their distribution and abundance. Go to sres.anu.edu.au/associated/myna/ to get involved.

The native Noisy and Bell Miners (Bellbirds) are honeyeaters, unrelated to the introduced Indian Myna but sometimes confused with them because apart from the same sounding name and similar appearance they're also noisy, bossy birds that live in big social groups that aggressively displace other birds. The Noisy Miner thrives on the year round supply of nectar in suburban gardens and defends it by driving out any small honeyeaters and wrens. The Bell Miner feeds on the sweet secretions of tiny gum-leaf eating psyllids and protects them from insectivorous birds. As a consequence the trees become infested and suffer dieback.



Little Pied Cormorant

For Central Coast Indian Myna Action Group contact Peter Blyth on 4324 9290 or cenco@bigpond.net.au.

Weed Guide

Water Hyacinth flowers over Summer. It is a prohibited plant in all States. The dense mats of vegetation reduce Oxygen, temperature and light levels in our creeks and rivers. The habitat of invertebrates and native fish is destroyed. **Never discard pond weeds into waterbodies**

DECEMBER

date

observations

location

weather

date	observations	location	weather

diary

DECEMBER

DECEMBER

date

observations

location

weather

diary

DECEMBER

date

observations

location

weather

date	observations	location	weather

diary

DECEMBER

DECEMBER

date

observations

location

weather

diary